



CONCERTS @ OHIO STATE

.....
music.osu.edu

School of Music
Performance Series
Autumn 2015



**THE OHIO STATE
UNIVERSITY**



23rd Annual Music Celebration Concert

Friday, Dec. 4, 2015

(see page 11 for additional information)

AUTUMN 2015 CONCERTS

All events take place in **Weigel Hall** unless otherwise noted.

All events are subject to change.

Visit music.osu.edu for the most up-to-date information.



Greetings from the Director

Well, you made us very happy. Last year, you attended our performances in record numbers. So, I am thrilled to continue to offer, as our gift to Central Ohio and music lovers everywhere: **FREE ADMISSION** to School of Music events with the exception of just a few premium concerts, noted throughout this brochure. We have hired an architect for our new facility and our fund-raising New Day Initiative is gaining steam. But there is no reason to wait for a new building. We're making music now and we hope you will join us and find out why we are celebrating **YOUR** School of Music.

Want to get involved? Join our new Patron Society. Learn about the possibilities at music.osu.edu.

A few fall highlights:

- The **Lectures in Musicology** Series
- *Moon Over Alabama*: a Kurt Weill Cabaret at the Short North Stage
- The Figaro Project: *Scènes de la Beaumarchais*
- The Ohio State Marching Band Concert at the Schottenstein Center
- 23rd Annual Music Celebration Concert

Parking on campus is easier than you think. We recommend using the Ohio Union South Garage, located a short distance south of our performance venues and accessible from both College Road and High Street. Find more information in the back of this brochure and at music.osu.edu. We want to know you, what you enjoy, and how we can make your Ohio State concert-going experience the best it can be. Great music for everyone ... and it's **FREE!**

Richard L. Blatti
Director and Professor
The Ohio State University School of Music

SEPTEMBER CONCERTS

09
21 Faculty
Collage

MONDAY 8 p.m.

Enjoy this annual concert showcasing chamber and solo performances by faculty artists in a unique collage setting.

09
24 Jazz at
Mirror Lake

THURSDAY 5:30 p.m.

BROWNING AMPHITHEATRE

Rain location: Weigel Hall

09
24 Guest Artist: Cory Mixdorf, trombone

THURSDAY 8 p.m.

HUGHES HALL AUDITORIUM 1899 College Rd.



Cory Mixdorf, assistant professor of trombone, University of Arkansas, and collaborative pianist Miroslava Panayotova will present a recital of romantic and 20th century trombone repertoire. Mixdorf is a Conn-Selmer Performing Artist.

09
25 Symphony Orchestra

FRIDAY 8 p.m.

music.osu.edu/events

All events take place in Weigel Hall unless otherwise noted.

09
28 Kia-Hui Tan & Fellows present
Ysaÿe & Friends

MONDAY

8 p.m.



Following the conclusion of her Ysaÿe sonatas project, Kia-Hui Tan, with DMA student Snow Shen, will present Ysaÿe's rarely performed Sonata for Two Violins in celebration of its 100th anniversary. To celebrate her 40th birthday and a decade of teaching at Ohio State, Tan will be joined by alumni fellows Juan Carlos Ortega (Honegger's Sonatine for Two Violins) and Samuel Johnson (Ravel's Duo for Violin and Cello).

OCTOBER CONCERTS

10
01 Wind Symphony

THURSDAY 8 p.m.

10
02 Moon Over Alabama: A Kurt Weill Cabaret

FRIDAY 7:30 p.m. & 9:30 p.m.

THE GREEN ROOM AT THE GARDEN THEATRE 1187 N. High St.



Explore the intimate side of this prolific theatrical composer with an evening of his most memorable songs in a cabaret setting, all while enjoying libations from Ethel's Stage Left Lounge.

Free admission. Seating is limited. Reservations strongly recommended. Visit music.osu.edu for details and online reservations.

Presented by Opera and Lyric Theatre

10/03 Parent & Family Weekend Concert

SATURDAY 8 p.m.

Presented in association with Ohio State's Parent and Family Weekend, which offers many events and activities planned especially for students and families.

10/04 Choral Collage

SUNDAY 3 p.m.

10/08 Symphonic Band

THURSDAY 8 p.m.

10/13 University Band

TUESDAY 8 p.m.



10/18 Faculty & Guests: Celebrating Franz Liszt

SUNDAY Welcome Lecture 4 p.m.

Concerts 4:30 p.m. and 6:30 p.m.

Join the Ohio Chapter of the American Liszt Society for its inaugural event. Ohio ALS Chapter president and faculty member Caroline Hong, society members and guest pianists will perform two concerts in celebration of Liszt's October birthday. Professor Arved Ashby, musicology, will give a pre-concert talk entitled "The Two Liszts" and lead a panel discussion. A reception will be held between the two concerts.

10/20 Collegiate Winds

TUESDAY 8 p.m.

10/21 Jazz Lab Ensemble

WEDNESDAY 8 p.m.

10/22 Jazz Workshop Ensemble

THURSDAY 8 p.m.

10/23 - 10/24 The Figaro Project: *Scènes de la Beaumarchais*

FRIDAY & SATURDAY 7:30 p.m.

MERESHON AUDITORIUM STAGE 1871 N. High St.



Featuring scenes from the works of Paisiello, Rossini, Mozart, Milhaud, Corigliano and Rush.

Follow Figaro, Beaumarchais' irrepressible Barber of Seville, on his journey from itinerant con man to impetuous valet to family factotum across the varied works of opera's most celebrated composers, including the world première of scenes from the never-before-heard opera *The Guilty Mother* by Lawrence Rush and A. Scott Parry.

Presented by Opera and Lyric Theatre

\$10 general admission
\$5 senior citizens, Alumni Assoc. members, Ohio State faculty and staff, students

The limited onstage seating of this black box setting is first-come, first-served. Advance ticket purchase is recommended. Tickets at wexarts.org, in person at the Wexner Center for the Arts Patron Services Desk, or call (614) 292-3535.

10/25 Symphony Orchestra

SUNDAY 3 p.m.

10/26 Percussion Ensemble

MONDAY 8 p.m.

music.osu.edu/events

All events take place in Weigel Hall unless otherwise noted.

10
27 Jazz Ensemble

TUESDAY

8 p.m.



10
30 HalleBOOia!

FRIDAY

8 p.m.

An annual favorite featuring vocal and instrumental solo and chamber performers, as well as audience members, dressed in full Halloween attire. Join the fun!

NOVEMBER CONCERTS

11
03 Wind Symphony

TUESDAY

8 p.m.

11
05 Jazz Combos Collage

THURSDAY

8 p.m.

11
10 Gospel & Spiritual Choir

TUESDAY

8 p.m.



11
12 Ohio State Marching Band
Hometown Concert

THURSDAY

7:30 p.m.

THE SCHOTTENSTEIN CENTER

555 Borror Dr.

Don't miss an exciting new show when The Ohio State University Marching Band thunders into the Schottenstein Center. The Best Damn Band in the Land will entertain fans with selections from their popular halftime shows, fan favorites and traditional Ohio State tunes, including a surprise tribute to the 50th anniversary of *Hang On Sloop*. DOT THE SCHOTT with us on Nov. 12.

Reserved seats are just \$15/\$25 and go on sale starting Sept. 25 at the Schottenstein Center Box Office, the Ohio State Theatre Box Office (614) 292-2295 or through Ticketmaster.com. Visit schottensteincenter.com for event details. On-site parking is free.

FOR SCHOOL GROUPS AND RETIREMENT COMMUNITIES

The Marching Band will perform a special concert just for you at 10 a.m.

School Groups: Visit music.osu.edu for details and online reservations or call (614) 247-7036.

Retirement Communities: Call (614) 688-5561

music.osu.edu/events

All events take place in Weigel Hall unless otherwise noted.

DECEMBER CONCERTS

11/15 Women's Glee Club & University Chorus

SUNDAY 3 p.m.

11/15 Guest Artists: The Blakemore Trio

SUNDAY 8 p.m.



Critics have hailed the Blakemore Trio for their “riveting intensity,” and “all-but-perfect sense of ensemble, expressive phrasing and great intonation.” Since forming at Vanderbilt University in 2002, the Blakemore has developed a national reputation, making their New York debut at Merkin Hall in 2010 and releasing critically acclaimed 2013 recordings on the Blue Griffin and Albany labels. Their first Columbus appearance will feature works by Beethoven and Schumann.

11/17 Collegiate Winds & University Band

TUESDAY 8 p.m.

11/18 Symphonic Band

WEDNESDAY 8 p.m.

11/19 Jazz Ensemble

THURSDAY 8 p.m.

11/20 Symphony Orchestra

FRIDAY 8 p.m.

11/22 Men's Glee Club & Chorale

SUNDAY 3 p.m.

12/01 Wind Symphony

TUESDAY 8 p.m.

12/04 23rd Annual Music Celebration Concert

FRIDAY 8 p.m.

MERSHON AUDITORIUM 1871 N. High St.

This popular annual musical extravaganza showcases the school's many performing groups – from the Symphony Orchestra, glee clubs and concerts bands to its Jazz Ensemble, Percussion Ensemble, soloists and much more, all presented in a non-stop collage setting.

\$20 general public **RSVD**
\$10 senior citizens, Alumni Assoc. members, Ohio State faculty and staff, students and children

This concert is a traditional sell-out. Obtaining tickets in advance is recommended. Tickets at wexarts.org, in person at the Wexner Center for the Arts Patron Services Desk, or call (614) 292-3535.

FOR SCHOOLS GROUPS

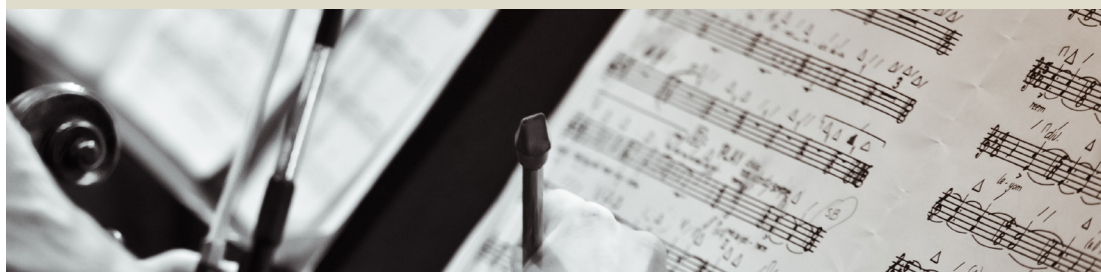
The School of Music will perform the Music Celebration Concert just for you at 10 a.m. Teachers and administrators, visit music.osu.edu for online registration and details or call (614) 247-7036. **Groups only, grades 4–12**



12
06 First-Year Undergraduate String Orchestra
and University Community Orchestra

SUNDAY

3 p.m.



Lectures in Musicology

CO-SPONSORED BY THE OHIO STATE UNIVERSITY LIBRARIES

MONDAYS

4 p.m.

Lectures are held Mondays at 4 p.m. (new time) in the 18th Avenue Library, 175 West 18th Ave., second floor (Music/Dance Library), room 205, unless otherwise noted. These events are free and open to the public.

09
14 The Progress of White Notation:
From Ink Color to Ideology **Graeme Boone**
The Ohio State University

10
05 Auditors Abroad:
Western Travelers Listen to Meiji-Era Japan **Kerim Yasar**
The Ohio State University

10
12 Rank and File: Everyday Autobiographies
of German Opera after World War II **Emily Richmond Pollock**
Massachusetts Institute
of Technology

10
19 Sounding Minangkabau:
Gongs and Pop Songs in Indonesia **Jennifer Fraser**
Oberlin Conservatory

11
02 The Notes Mean Something:
Improvised Music and the Study of Religion **Jason Bivins**
North Carolina State University
CO-SPONSORED BY THE MUSIC AND SOUND STUDIES WORKING GROUP OF THE HUMANITIES INSTITUTE AT OHIO STATE

11
23 Blues in the Church:
Performing Pluralism in East Berlin **Alison Furlong**
The Ohio State University

Reaching Out to Our Community



The Ohio State School of Music offers more than 25 outreach events each year. Programs range from one-day instrument workshops to our Youth Summer Music Programs, and from our highly regarded honor band festivals to our youth concerts, which welcome more than 4,000 students and their teachers each year.

We value our mission to educate, enrich and instill a lifelong love of music in future generations of musicians. We provide programs for everyone – from the promising middle school musician to the serious student considering a music major in college and the music educator seeking professional development.

Do you know a musician who might be interested?
Visit music.osu.edu/outreach for details.

TICKET INFORMATION

The School of Music announces a special ticket policy for the 2015–2016 concert season. As our gift to the community, our concerts, with just a few exceptions, are **FREE TO ALL**.

For ticketed premium events, find the box office details located in the event listing in this brochure.

All event details and updates can be found at music.osu.edu – your best resource for all School of Music events, news, outreach and admissions information.

PARKING ON CAMPUS



PEDESTRIAN WALKWAYS

SURFACE LOTS

PARKING GARAGES

- 1 Drake Performance and Event Center
- 2 Arps Garage
- 3 Hughes Hall/School of Music
- 4 Weigel Hall/School of Music
- 5 Mershon Auditorium
- 6 Wexner Center
- 7 North Union Garage
- 8 South Union Garage

Convenient parking is available at three locations close to the School of Music. Visit music.osu.edu/about/visit-us

Recommended

The Ohio Union South Garage, 1759 North High St. (next to the Ohio Union), is accessible from both High Street and College Road (just north of 12th Avenue). This garage is open for visitors 24 hours/day, 7 days/week and is equipped with “Pay-On-Foot” machines. Take your ticket with you when you leave your car and pay “on foot” before returning to your car to exit.

The Ohio Union North Garage is open to visitors M–F after 4 p.m. and 24 hours on weekends. This garage is equipped with “Pay-In-Lane” and “Pay-On-Foot” machines.

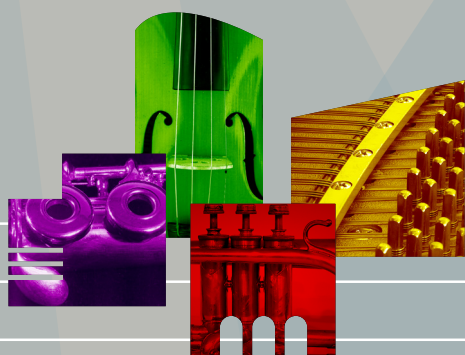
Limited Access

Arps Garage, 1990 College Rd. (one block north of Weigel Hall), is accessible via the 18th Avenue extension between College Road and High Street. This garage is open to visitors M–F after 4 p.m. and 24 hours on weekends.

Parking for performances in the Drake Performance and Event Center is available in the surface lots between Lincoln and Morrill Towers or adjacent to Ohio Stadium. Non-OSU parking pass holders, please use the Pay-By-Plate machines (you will need to know your license plate number). For surface lot parking: Parkmobile.com offers an app for paying parking fees via your phone or mobile device. Find out more at parkmobile.com.

All parking garages and parking lots have designated visitor disability parking spaces.

For the latest information about campus construction projects that may impact traffic and parking for our events, visit go43210.osu.edu.



THE SCHOOL OF MUSIC PATRON SOCIETY

Patrons make the music possible.
Learn how you can join.

Visit music.osu.edu

UPCOMING SPRING CONCERTS

02/29 — **03/01** Contemporary Music Festival with David Lang and Bang on a Can
MONDAY AND TUESDAY
WEIGEL HALL

03/31 — **04/03** 38th Annual Jazz Festival
THURSDAY – SUNDAY
WEIGEL HALL

04/08 — **04/10** Sweeney Todd: the Demon Barber of Fleet Street
FRIDAY – SUNDAY
THURBER THEATRE



THE OHIO STATE UNIVERSITY

School of Music
110 Weigel Hall
1866 College Rd.
Columbus, Ohio 43210

music.osu.edu

02620 011000 61801 11219



FOLLOW US: osumusic

Non-Profit Org.
U. S. Postage
PAID
Columbus, Ohio
Permit No. 711

CHANGE SERVICE REQUESTED