

The Ohio State University Concert Bands and Orchestral Winds Audition Information – Autumn Semester 2020

This document contains important information about auditions for concert bands and orchestra at Ohio State for Autumn Semester 2020. Auditions are open to all enrolled students at Ohio State **regardless of major**. Read the information below thoughtfully and contact Ensembles Administrator Mr. Christopher Dent by email at dent.50@osu.edu with questions about the process.

AUTUMN SEMESTER 2020 CONCERT BANDS STRUCTURE/FORMAT

To honor our fundamental commitment to the health, well-being, and safety of all involved in ensemble music making, the structure of large ensembles has been modified this semester. The modifications follow months of discussion in which the needs of musicians who gather in person to make music have been balanced with the most reliable scientific evidence available regarding COVID-19. Modifications to the size of ensembles, instrumentation, variety of music making settings, and performance experiences have been implemented. Additionally, strict adherence to all protocols established by our university have also been incorporated, and include the identified maximum number of musicians allowed in each given rehearsal space, the maximum length of any single rehearsal, and balancing in-person and virtual learning experiences.

All ensembles at Ohio State are credit-bearing courses. Ensemble rehearsal days and times for Autumn Semester 2020 are as follows:

Wind Symphony and Symphonic Band	M, W, and F from 2PM-3:40PM
Symphony Orchestra *	TH from 2PM-2:40PM
Collegiate Winds	TU from 7PM-9PM
University Band	TH from 7PM-9PM

* Regarding Symphony Orchestra: Observation of health and safety protocols makes it impossible for full orchestra music making this semester. In its stead, Professor Burns will be leading a Wind, Brass, and Percussion Repertoire Sectional on Thursdays from 2PM to 2:40PM. More details will be forthcoming from individual studio faculty.

View [this important video message](#) from Director of Bands Dr. Russel Mikkelson to learn more details about large ensemble music making during the autumn semester of 2020.

AUDITION PROTOCOL

- Auditions for Autumn 2020 will be video recorded by each auditionee, and submitted for evaluation according to the procedures outlined below. Auditions will be evaluated by conducting and studio faculty members. Recordings are due by 5PM on Monday August 10, 2020.
- All students auditioning for ensembles need to first complete an online audition registration, which can be accessed [here](#).
- The required audition materials/excerpts for all woodwind and brass instruments can be found [here](#). See below for which of the included materials are required for various ensemble auditions.
- All woodwind and brass students majoring in music are expected to prepare audition materials for Wind Symphony, Symphonic Band and/or Symphony Orchestra (see below). It is not permissible for a music major to prepare an audition for Collegiate Winds.
- Ohio State has decided to observe the safety guidelines and best practices outlined in the Percussive Arts Society's publication *Managing COVID-19 Protocols in Administering Performance Curriculum*. One of the central best practices is not sharing sticks, mallets, and/or trap equipment between musicians. As a result, we have decided that we are unable to accommodate non-music major percussionists in large ensembles this semester. We anticipate welcoming non-major percussionists back to ensemble music making as soon as it becomes possible to do so safely.

continued ...

REQUIRED MUSICAL EXCERPTS

The required audition materials/excerpts for all woodwind and brass instruments can be found [here](#). Should you encounter issues with downloading the materials, please contact Ensembles Administrator Mr. Christopher Dent via email at dent.50@osu.edu. Mr. Dent responds to email between 9AM to 5PM Monday through Friday.

WIND SYMPHONY, SYMPHONIC BAND, and/or SYMPHONY ORCHESTRA

From the audition packet, prepare and perform the following items:

- a. the Lyrical Etude
- b. all etudes and excerpts in the order in which they appear in the pdf document

COLLEGIATE WINDS

From the audition packet, prepare and perform only the following items:

- a. all exercises on the Compulsories page in the order in which they appear in the pdf document
- b. the Lyrical Etude

UNIVERSITY BAND

There is no audition requirement for University Band. Students interested in being part of University Band should register for the course. All registered students will be contacted via email near the start of the semester. Questions can be directed to Graduate Teaching Associate Daniel Farr via email at farr.68@osu.edu.

AUDITION RECORDING TECHNICAL INFORMATION

BEFORE YOU BEGIN – EQUIPMENT CHECK

- Use whatever video recording device you have at your disposal (video camera, phone, tablet, computer, etc.), but select a device that particularly captures the highest quality audio.
- When positioning the camera, be sure that you can be seen clearly in the video.
- Before recording, test the audio level and picture quality of both the device and microphone.

THE ACTUAL RECORDING

- The audition video recording is to be one continuous take, with no pauses or edits in any way.
- Begin the video with a short personal introduction in which you share:
 - + your first and last name
 - + year in school this semester (i.e. “2nd year undergraduate student,” “1st year master’s degree student,” etc.)
 - + your declared major (i.e. “music performance,” “music education,” “engineering,” etc.)
 - + your hometown (i.e. “Columbus, OH,” “Moorhead, MN,” etc.)
 - + the ensemble for which you are auditioning (either “Wind Symphony/Symphonic Band” or “Collegiate Winds”)
- Following your personal introduction, proceed to the excerpts, performing them in the order in which they appear in the pdf document. You may take some time between excerpts, but do not stop or pause the recording. Allow the recorder to capture the time you take between excerpts.

FINALIZING AND UPLOADING YOUR VIDEO

- View your completed video in its entirety to ensure that it includes all of the required components and your finest quality performance of the required excerpts.
- Auditions should be posted as a private video on YouTube or uploaded to a file sharing network such as Dropbox. Below are links to instructional videos that can help with this process:

Uploading videos to YouTube:

<https://www.youtube.com/watch?v=klVWGHtRTuE>

How to share a private YouTube video:

<https://www.youtube.com/watch?v=IYKLBFR-zqM>

Upload and share files using dropbox

<https://www.youtube.com/watch?v=f27A-RT6IEg>

continued ...

- Send an email to Ensembles Administrator Christopher Dent via email at dent.50@osu.edu. Please type “Ensembles Audition” in the subject line of the email and include the following information in the body of the email:
 - a. First and last name
 - b. Instrument
 - c. Declared major (as recorded on the Audition Registration form – see above)
 - d. the working link to the finalized audition video
- Links to all audition videos must be received by **5PM on Monday August 10, 2020**.

AUDITION RESULTS AND QUESTIONS

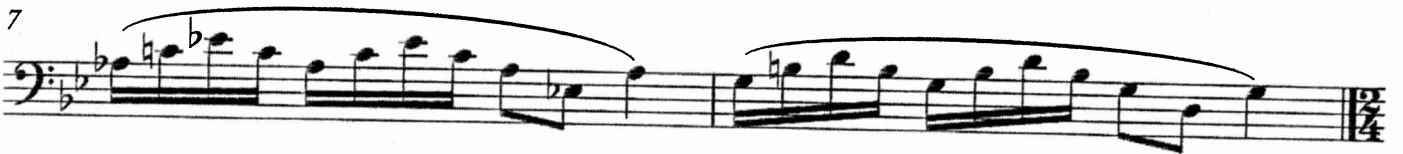
No ensemble rehearsals take place during the first week of classes. All students who complete and submit an audition for autumn semester large ensembles will receive an email notification on or before 12PM on Thursday August 27, 2020. Should you have not received an email by that time, please contact Ensembles Administrator Mr. Christopher Dent via email at dent.50@osu.edu. Mr. Dent responds to email between 9AM to 5PM Monday through Friday and is also available for general questions about ensembles and the audition process.

Compulsories - Trombone/Euphonium

#1. Lip Slurs ♩ = 96



5 #2. ♩ = 96



9 #3. ♩ = 108



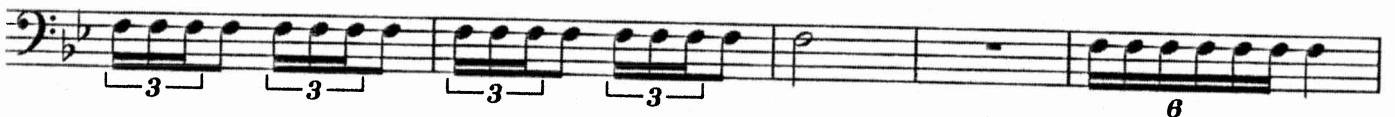
14 #4. Double Tonguing (fast, but clean)



18



24 #5. Triple Tonguing (fast, but clean)



29



Lyrical Etude

Create your most musically mature interpretation of this etude.



Cello Suite No. 5: Sarabande (J. S. Bach)

SARABANDE (♩ = 50-56)

p legato

p *cresc.*

f *p* *rit.*

JJ

“Hands Across the Sea” March (Sousa)

(♩ = 120)

ff

Variations on “America” (Ives/Schuman)

Q (♩ = 100-108)

ff

Rit.

R Più mosso (♩ = ca. 120)

ff

S

Meno mosso (♩ = ca. 100)

mf *ff* *mp* *fff*

mf *ff* *mp* *fff*

Overture to *William Tell* (Rossini)

Allegro. (♩ = 104-112)

C

ff

sf

sf *sf* *sf*

D

sf *sf* *sf* *sf* *sf* *sf* *sf*