

Collegiate Winds

Non-music majors who wish to audition for Collegiate Winds only should prepare the following two pages:

- I. Compulsories
- II. Lyrical Etude (Vocalise #2)

Compulsories

#1 - Full Range Scale with Articulation Pattern - At a tempo that demonstrates evenness of rhythm, depth of tone, and impeccable intonation.

Bass Clarinet
in B \flat

Musical notation for exercise #1, consisting of two staves of music in 4/4 time. The first staff shows a scale starting on a low note, moving up with various articulations like slurs and accents. The second staff continues the scale up to a high note and then descends back down, also with various articulations. The piece ends with a double bar line and a 3/4 time signature.

#2 - Single Tongue - As fast as possible, while presenting clear articulations, accurate rhythm, and a consistent pulse of your choosing.

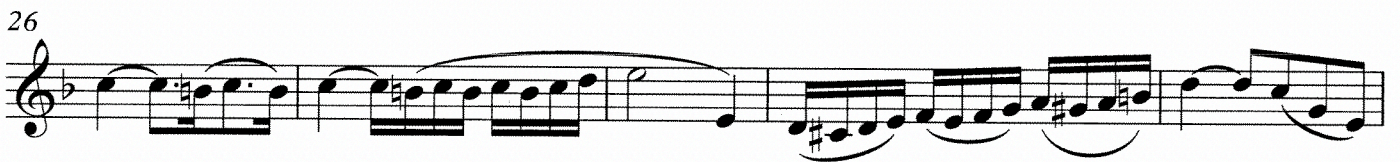
Musical notation for exercise #2, consisting of two staves of music in 3/4 time. The first staff shows a series of eighth notes with triplets indicated by a '3' above the notes. The second staff continues with more triplet eighth notes. The piece ends with a double bar line.

Vocalise #2

Clarinet in B \flat 1

Giuseppe Concone

Andante Cantabile ♩ = 76



Wind Symphony, Symphonic Band, Symphony Orchestra Winds

Music majors and non-majors who wish to be considered for placement in all ensembles should prepare the following materials:

1. Copland: Variations on a Shaker Melody from *Appalachian Spring*
2. Hindemith: *Symphony in B-flat*, mvt. 1
3. Hindemith: *Symphony in B-flat*, mvt. 1
4. Hindemith: *Symphony in B-flat*, mvt. 1
5. Grainger: *Molly on the Shore*

(Bass Clarinet) Copland: *Var. on a Shaker Melody, from Appalachian Spring* ...
In 2/4; mm. Quarter Note = 80

Musical score for Bass Clarinet, Copland: *Var. on a Shaker Melody, from Appalachian Spring*. The score is in 2/4 time, with a quarter note equal to 80 mm. It consists of four staves of music. The first staff begins with a circled '6' and a circled '5' above the first two notes, followed by a circled '9' above the third note. A red bracket highlights the first three notes. The first staff ends with a circled '6' above the final note. The second staff begins with a circled '7' above the first note. The third staff begins with a circled '8' above the first note and ends with a circled '4' above the final note. The fourth staff begins with a circled '9' above the first note and ends with a circled 'f' below the final note. The score includes dynamic markings: *f cant.* on the first staff, *mf cresc.* on the fourth staff, and *f* on the final note of the fourth staff. The key signature is two flats (B-flat and E-flat).

(Bass Clarinet) Hindemith: *Symphony in B-flat, mvt. I (excerpt 1)*... In 3/2; mm. Half Note = 88-92

Musical score for Bass Clarinet, Hindemith: *Symphony in B-flat, mvt. I (excerpt 1)*. The score is in 3/2 time, with a half note equal to 88-92 mm. It consists of four staves of music. The first staff begins with a circled 'p' below the first note and ends with a circled 'cresc.' below the final note. The second staff begins with a circled '60' above the first note. The third staff begins with a circled 'E' above the first note and ends with a circled 'f' below the final note. The fourth staff begins with a circled '66' above the first note and ends with a circled '1' above the final note. The score includes dynamic markings: *p* on the first staff, *cresc.* on the first staff, *f* on the third staff, and *f* on the final note of the fourth staff. The key signature is two flats (B-flat and E-flat).

(Bass Clarinet) Hindemith: *Symphony in B-flat, mvt. I (excerpt 2)*... In 2/2; mm. Half Note = 88-92

Musical score for Bass Clarinet, Hindemith: *Symphony in B-flat, mvt. I (excerpt 2)*. The score is in 2/2 time, with a half note equal to 88-92 mm. It consists of four staves of music. The first staff begins with a circled '6' below the first note and ends with a circled 'f' below the final note. The second staff begins with a circled '87' above the first note and ends with a circled '2' above the final note. The third staff begins with a circled '92' above the first note and ends with a circled 'G' above the final note. The fourth staff begins with a circled '97' above the first note and ends with a circled 'f' below the final note. The score includes dynamic markings: *f* on the first staff, *f* on the final note of the first staff, *f* on the final note of the second staff, and *f* on the final note of the fourth staff. The key signature is two flats (B-flat and E-flat).

(Bass Clarinet) Hindemith: *Symphony in B-flat*, mvt. I (excerpt 3)... In 3/2; mm. Half Note = 88-92

156 2 *mf*

161 *cresc.*

164 *f* *dim.*

Molly on the Shore (Percy Grainger)

half note=100

FAST

p

3

3

3

3