

## **Collegiate Winds**

Non-music majors who wish to audition for Collegiate Winds only should prepare the following two pages:

- I. Compulsories
- II. Lyrical Etude (Vocalise #2)

# Compulsories

Choose one chromatic scale below - Perform at a tempo that demonstrates evenness of rhythm, depth of tone, and impeccable intonation.

Clarinet in B $\flat$

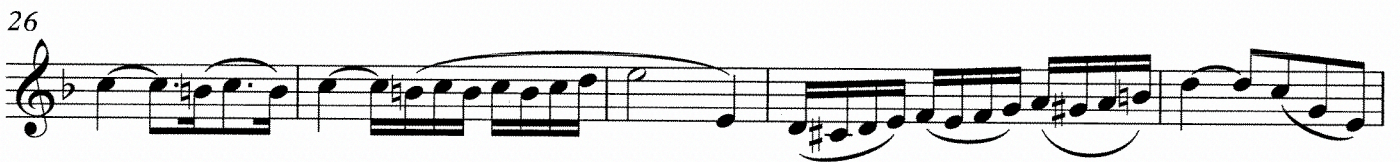


# Vocalise #2

Clarinet in B $\flat$  1

Giuseppe Concone

*Andante Cantabile* ♩ = 76



## **Wind Symphony, Symphonic Band, Symphony Orchestra Winds**

Music majors and non-majors who wish to be considered for placement in all ensembles should prepare the following materials:

- I. Holst "Second Suite in F"
  - a. Excerpts as noted
- II. Klose
  - a. Excerpt as noted
- III. Borodin "Polovtsian Dances"
  - a. Excerpt as noted
- IV. Mendelssohn Symphony No. 3
  - a. Excerpt as noted
- V. Beethoven Symphony No. 6
  - a. Excerpt as noted
- VI. Beethoven Symphony No. 8
  - a. Excerpt as noted

**Second Suite in F Movement #1 Gustav Holst**

Tempo: Dotted quarter note equals 116-120

Musical score for the first movement of the Second Suite in F, featuring three staves. The key signature is two flats (B-flat and E-flat). The score includes dynamic markings *p*, *ff*, and *cresc.*, and performance instructions *J*, *K*, and *D.C. al Fine*.

**Second Suite in F Movement #3 Gustav Holst**

Tempo: Quarter note equals 96

Musical score for the third movement of the Second Suite in F, featuring three staves. The key signature is one sharp (F#). The score includes dynamic markings *p*, *f*, *fff*, and *cres.*, and performance instructions *C* and *J*.

# Klose

The musical score for 'Klose' is written for piano and consists of six staves. The key signature is one sharp (F#) and the time signature is 2/4. The piece is characterized by its intricate and rapid sixteenth-note passages. The first staff begins with a melodic line that includes a *cresc.* marking. The second staff features a dense texture of sixteenth notes with *mf* dynamics. The third and fourth staves show a complex interplay of sixteenth-note patterns, with dynamic markings ranging from *cresc.* and *f* to *p*. The fifth staff continues the rapid sixteenth-note texture, incorporating trills (*tr*). The sixth staff concludes the piece with a final melodic flourish, also featuring trills (*tr*).

Borodin — Polovtsian Dances

Clarinetto I.

4  
in B. 2 Allegro vivo.  
*mf*



7. Mendelssohn-Sym. 3 "Scotch"



C. Hartig

1. Beethoven Sym. 6

*f* *p* *f* *dolce*  
*f*  
*f*  
*f* *dim.* *pp*

2. Beethoven Sym. 8

*dolce* *cresc.* *p*  
*p* *cresc.*  
*f* *p dolce cresc.* *p*  
*p dolce* *p dolce*  
*cresc.* *p* *cresc.*  
*p* *dimin.* *pp*