

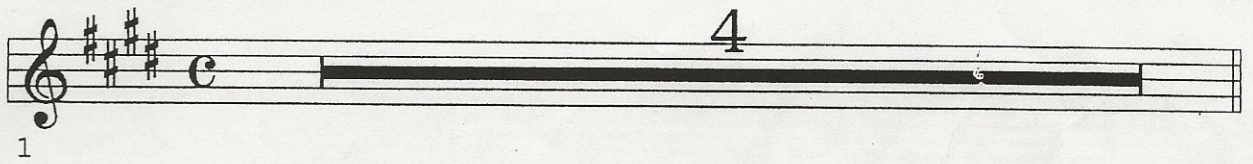


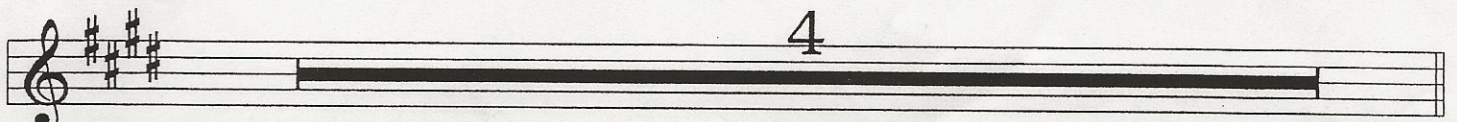
# BASS III

$\text{♩} = 145$   
Swing

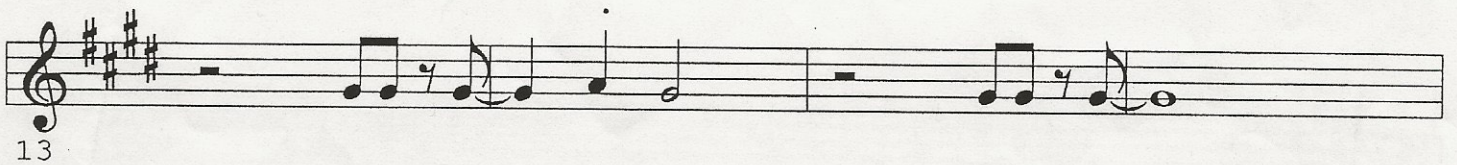
## BLUES IN THE BASEMENT

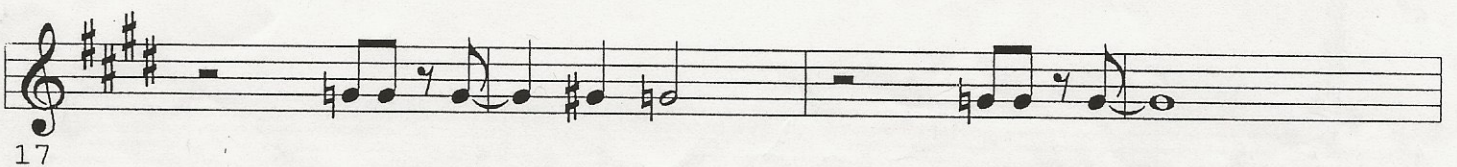
Music by Ray Brown  
Arranged by John Clayton

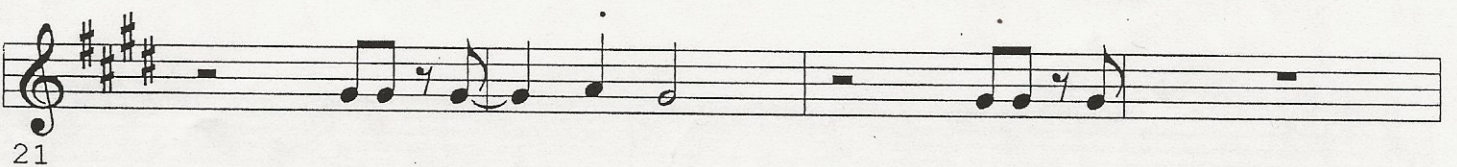
1 

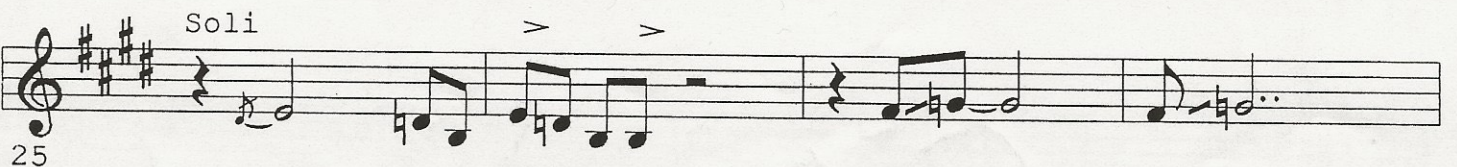
5 

9 

13 

17 

21 

25 

29

33

37

41

45

49

53

57



Musical staff 93 in bass clef, key of D major. It contains a sequence of eighth and sixteenth notes, followed by a whole note chord consisting of D4, F#4, and A4.

93

Musical staff 97 in bass clef, key of D major. It features a triplet of eighth notes (D4, E4, F#4) marked with a sharp sign and a slur, followed by a quarter note G4 and a half note A4. The staff concludes with a whole note chord of D4, F#4, and A4.

97

Musical staff 101 in bass clef, key of D major. It begins with a triplet of eighth notes (D4, E4, F#4) marked with a sharp sign and a slur. The staff ends with a treble clef and a key signature change to D major (two sharps).

101

*D.S. al Coda*



Musical staff 105 in treble clef, key of D major. It contains a sequence of eighth notes with accents (>) and a final half note with a fermata.

105

Musical staff 109 in treble clef, key of D major. It contains a sequence of eighth notes with accents (>) and a final half note with a fermata. The staff ends with the instruction *PIZZ.* and a bass clef.

109

Musical staff 113 in bass clef, key of D major. It contains a sequence of eighth notes with accents (>) and a final half note with a fermata. The instruction *ARCO* is placed above the staff, and *ff* is placed below the staff.

113

BASS IV

$\text{♩} = 145$

Swing

# BLUES IN THE BASEMENT

Music by Ray Brown

Arranged by John Clayton

1 4

5 4

9 *mf* *pizz* A

13

17

21

25

29

33

37

41

45

49

53

57

C

61

65

69

D

73

77

81

E

85

89

Musical staff 93 in bass clef, key of D major. It contains a sequence of eighth and sixteenth notes, followed by a rest and a final chord.

93

Musical staff 97 in bass clef, key of D major. It features a sequence of eighth notes with slurs, followed by a rest and a final chord.

97

Musical staff 101 in bass clef, key of D major. It begins with a triplet of eighth notes, followed by a rest and a final chord in treble clef.

101

*D.S. al Coda*



Musical staff 105 in treble clef, key of D major. It contains a sequence of eighth notes with accents (>), followed by a rest and a final chord.

105

Musical staff 109 in treble clef, key of D major. It contains a sequence of eighth notes with accents (>), followed by a rest and a final chord. The instruction "PIZZ." is written above the staff.

109

Musical staff 113 in bass clef, key of D major. It contains a sequence of eighth notes with accents (>), followed by a rest and a final chord. The instruction "ARCO" is written above the staff, and "ff" is written below the staff.

113

# BASS VI

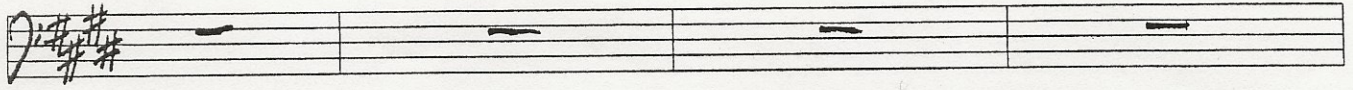
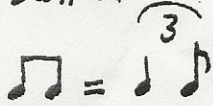
# BLUES IN THE BASEMENT

♩ = 145

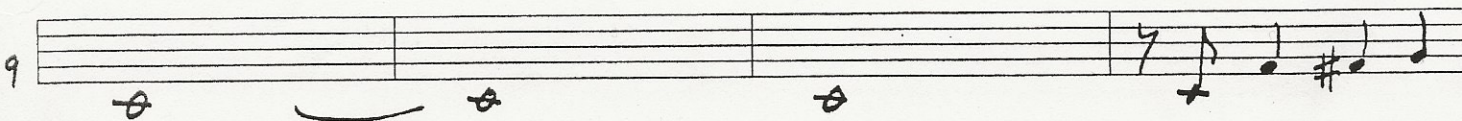
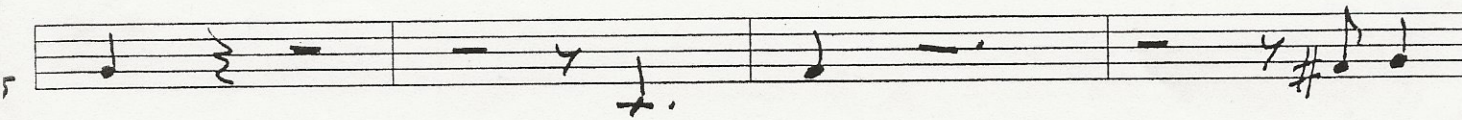
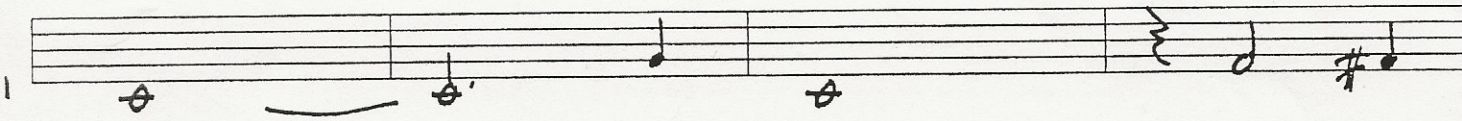
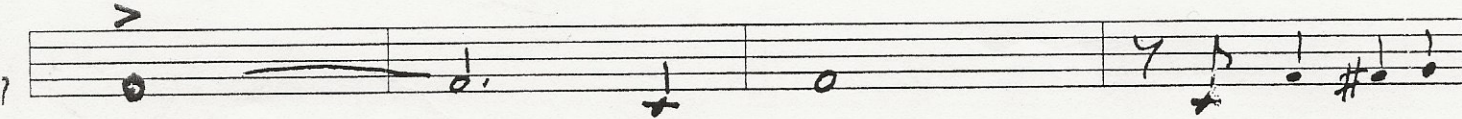
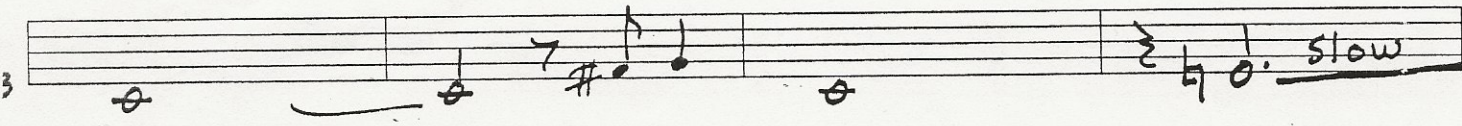
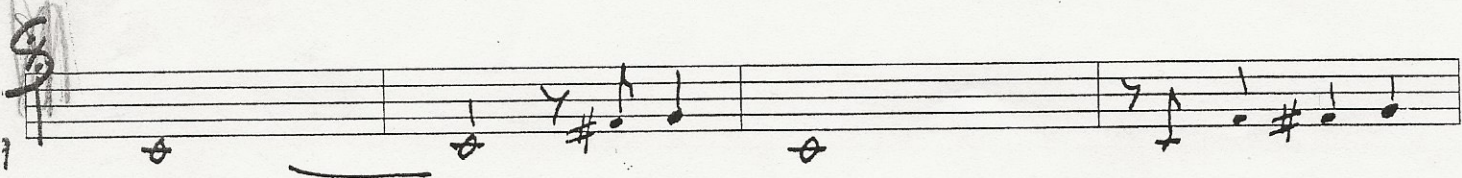
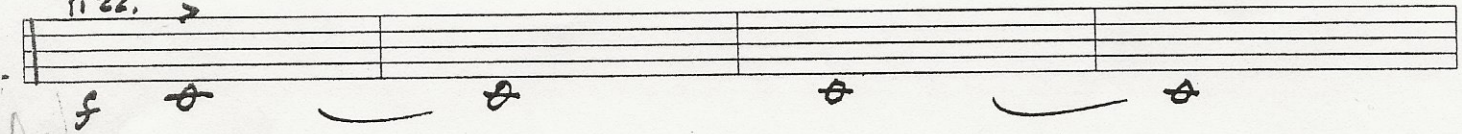
(SWING)

Music by Ray Brown

Arranged by John Clayton



Pizz. >



slow

(B) 8

Handwritten musical notation for section B, measures 1-8. The notation is on a single staff with a key signature of three sharps (F#, C#, G#). Measure 1 starts with a treble clef and a key signature change to three sharps. The melody consists of quarter notes and eighth notes with various accidentals. Measure 8 ends with a double bar line and a sharp sign.

(C) G7 1150

Handwritten musical notation for section C, measures 1, 5, and 69. The notation is on a single staff with a key signature of one sharp (F#). Measure 1 starts with a treble clef and a key signature change to one sharp. Measure 5 and 69 are marked with guitar chords C7 and D7 above the staff. Measure 69 ends with a double bar line and a sharp sign.





Musical staff with treble clef, key signature of two sharps (F# and C#), and a double bar line. The staff contains a sequence of notes and rests: a quarter note (F#), a half rest, a half rest, a quarter note (C#), a quarter note (F#), a half rest, a half rest, a quarter note (C#), and a quarter note (F#).

Musical staff with treble clef. The staff contains a sequence of notes and rests: a quarter note (F#), a half rest, a half rest, a quarter note (C#), a quarter note (F#), a half rest, and a half rest. Above the staff, the handwritten text "(To Bow)" is written above the second measure.

Musical staff with treble clef. The staff contains a sequence of notes and rests: a quarter note (F#), a quarter note (C#), a quarter note (F#), a half rest, a quarter note (F#), a quarter note (C#), a quarter note (F#), and a quarter note (C#). Above the staff, the handwritten text "Arco" is written above the second measure. Below the staff, there are several handwritten symbols, including a sharp sign (#), a vertical line with a circle, and a vertical line with a triangle. To the right of the staff, the word "FINE" is written and underlined.

Empty musical staff.

Empty musical staff.

Empty musical staff.

Empty musical staff.

Empty musical staff.