

The Ohio State University Concert Bands and Orchestral Winds Audition Information – Autumn Semester 2021

This document contains important information about auditions for concert bands and Symphony Orchestra at Ohio State for Autumn Semester 2021. Auditions are open to all enrolled students at Ohio State **regardless of major**. Read the information below thoughtfully and contact Ensembles Administrator Mr. Christopher Dent at dent.50@osu.edu with questions.

AUTUMN SEMESTER 2021 CONCERT BANDS STRUCTURE/FORMAT

To honor our fundamental commitment to the health, well-being, and safety of all involved in ensemble music making, the structure of large ensembles may be modified this semester.

All ensembles at Ohio State are credit-bearing courses. Ensemble rehearsal days and times for Autumn Semester 2021 are as follows:

Wind Symphony and Symphonic Band	M and W from 1:50-3:55PM and F from 1:50-2:45PM
Symphony Orchestra	TU and TH from 1:50-3:55PM
Collegiate Winds	TU and TH from 7-8:30PM
University Band	TU and TH from 7-8:30PM

AUDITION PROTOCOL

- Auditions are required for membership in the Wind Symphony, Symphonic Band, Symphony Orchestra, and Collegiate Winds. **Auditions are open to all students enrolled at The Ohio State University, regardless of major.**
- Audition Sign Ups are completed online via Signup Genius. The link is available [here](#).
 - If you are unable to audition during the scheduled audition window for your instrument, contact [Mr. Christopher Dent](#) to request an alternate audition time. *Please note, while we will try to accommodate requests for alternate times, we cannot guarantee that you will be granted your requested time.*
- Complete the online [Ohio State University Instrumental Ensemble Information Form](#) before you arrive for your audition. If you have difficulty accessing the form, contact [Mr. Dent](#).
- Music Majors are required to prepare repertoire for Wind Symphony, Symphonic Band, and Orchestra. Non-Music Majors may choose to audition for all ensembles or Collegiate Winds only. See next page for information on required repertoire for all parties.
- The audition committee may stop you at any point in the audition, once they feel they have heard enough to make an appropriate ensemble placement.

continued ...

REQUIRED MUSICAL EXCERPTS

The required audition materials/excerpts for all woodwind and brass instruments can be found [here](#). Should you encounter issues with downloading the materials, please contact Ensembles Administrator Mr. Christopher Dent via email at dent.50@osu.edu. Mr. Dent responds to email between 9AM to 5PM Monday through Friday.

WIND SYMPHONY, SYMPHONIC BAND, and/or SYMPHONY ORCHESTRA

From the audition packet, prepare and perform the following items:

All repertoire excerpts and etudes in the order in which they appear in the pdf document

A reminder: Music Majors (and non-majors who wish to be considered for placement in any ensemble) **do NOT** need to prepare the compulsories and/or lyrical etude.

COLLEGIATE WINDS

From the audition packet, prepare and perform **only** the following items:

- a. all exercises on the Compulsories page in the order in which they appear in the pdf document
- b. the Lyrical Etude

***In addition to the prepared materials in your packet,
all musicians will be asked to sight read.***

UNIVERSITY BAND

There is no audition requirement for University Band. Students interested in being part of University Band should register for the course. All registered students will be contacted via email near the start of the semester. Questions can be directed to Graduate Teaching Associate Daniel Farr via email at farr.68@osu.edu.

AUDITION RESULTS AND QUESTIONS

All students who complete and submit an audition for autumn semester large ensembles will receive an email notification on or before 12PM on Thursday August 26, 2021. Should you have not received an email by that time, please contact Ensembles Administrator Mr. Christopher Dent via email at dent.50@osu.edu. Mr. Dent responds to email between 9AM to 5PM Monday through Friday and is also available for general questions about ensembles and the audition process.

The Ohio State University
CONCERT BANDS and ORCHESTRA WINDS
Wind Symphony • Symphony Orchestra
Symphonic Band • Collegiate Winds
Audition Schedule

Autumn Semester 2021

Saturday, August 21, 2021

9:00 a.m. – 12:00 p.m.

Flute, Hughes Auditorium

9:00 a.m. – 12:00 p.m.

Clarinet, Weigel 174

2:30 p.m.- 5:30 p.m.

Saxophone, Weigel 174

2:30 p.m.- 5:30 p.m.

Trumpet, Hughes Aud.

Sunday, August 22, 2021

2:00 p.m.- 4:30 p.m.

Euph/Tuba, Hughes Aud.

2:00 p.m.- 3:00 p.m.

Oboe, Weigel 174

3:15 p.m.-4:30 p.m.

Bassoon, Weigel 174

6:30 p.m. - 8:30 p.m.

Horn, Hughes Aud.

6:30 p.m. - 8:00 p.m.

Trombone, Weigel 174

Monday, August 23, 2021

6:30 p.m.- 8:30 p.m.

Percussion, Weigel 174

Compulsories - Trumpet

#1. Lip Slurs ♩ = 76



5 #2. ♩ = 76



7



9 #3. ♩ = 108



14 #4. Double Tonguing (fast, but clean)



18



24 #5. Triple Tonguing (fast, but clean)



29

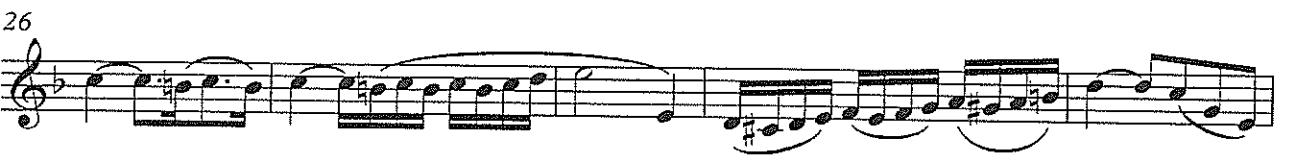


Trumpet in Bb 1

Vocalise #2

Giuseppe Concone

Andante Cantabile $\text{♩} = 76$



Norwegian March "Valdres" (Hanssen)
Excerpt 1

Moderato
Solo
mf

17 16

This musical excerpt is written for a single melodic line in 2/4 time, featuring a key signature of two flats (B-flat and E-flat). The tempo is marked 'Moderato'. The first measure is labeled 'Solo' and the dynamic is 'mf'. The melody consists of eighth and quarter notes with various articulations like accents and slurs. The piece concludes with a double bar line, with measure numbers 17 and 16 indicated above the staff.

Norwegian March "Valdres" (Hanssen)
Excerpt 2 (play upper system)

49 1 player ad lib.

ff
Tutti

ff

3

3

Fine

This musical excerpt is a two-staff piece in 2/4 time with a key signature of two flats. It begins at measure 49, marked '1 player ad lib.'. The first system features a dynamic of 'ff' and the instruction 'Tutti'. The upper staff contains a complex melodic line with eighth-note patterns and triplets, while the lower staff provides a harmonic accompaniment with slurs and accents. The second system continues the melodic and harmonic development, also featuring triplets. The piece ends with a double bar line and the word 'Fine' written above the staff.

Divertimento for Band (Persichetti)

Begin measure 13 and end at downbeat of measure 29

V
Soliloquy

Slowly
Solo

The image shows a musical score for a solo part, titled "Soliloquy" and marked "V". The tempo is "Slowly" and it is a "Solo". The score is written on four staves of music. The first staff begins with a treble clef, a key signature of one flat (B-flat), and a 3/4 time signature. The music starts with a mezzo-piano (*mp*) dynamic and a "dolce" marking. There are circled measure numbers 5, 10, 15, 20, 25, 30, and 35. The second staff has a first ending bracket over measures 10-12, with a first ending bracket over measure 11 and a second ending bracket over measure 12. The dynamic changes to piano (*p*) and there is an "espress." marking. The third staff has a "cresc." marking and a mezzo-forte (*mf*) dynamic. The fourth staff has dynamics of mezzo-piano (*mp*), piano (*p*), mezzo-forte (*mf*), piano (*p*), and pianissimo (*pp*). The score ends with a double bar line.

mp dolce

p espress.

cresc.

mp p mf dolce p pp

Arban Etude #6

290

Moderato. $\text{♩} = 76$

6. *mf*

p

pp

“Golden Jubilee” (Sousa)

Trumpet in B-flat

(♩ = 120)

ff

mf

leggiero

ff

p

ff